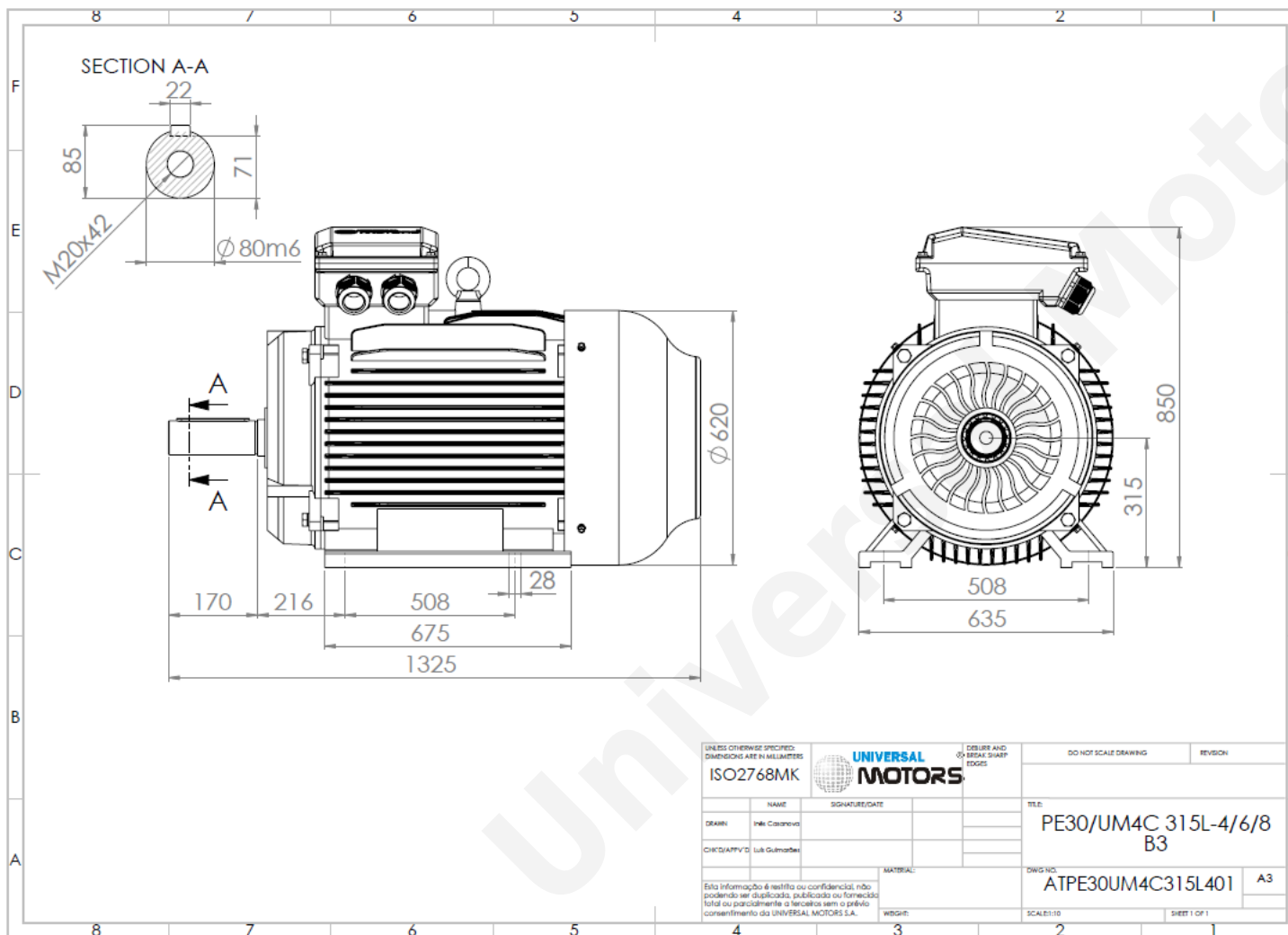




TECHNICAL DATA

Three Phase Electric Motors - Cast Iron Frame
 PE30 315L1-8
 90 kW / 125 Cv
 735 RPM



Motor type:	PE30 315L1-8
Output:	90 kW / 125 Cv
Speed (min ⁻¹):	735 RPM
Frequency:	50 Hz
Voltage:	400 V
Current:	169.6 A
Power factor (Cos Ø):	0.82
Poles:	8
Insulation class:	F
Temperature rise Class:	B
Efficiency 50%:	92.0 %
Efficiency 75%:	93.5 %
Efficiency 100%:	93.4 %
Torque:	1167 N.m
Tstarting/Tnominal:	1.8
Istarting/Inominal:	6.4
Tmaximum/Tnominal:	2.0
Noise:	82 Db(A)
Weight:	1182 Kg
Bearing DE:	NU 319
Bearing NDE:	6319 C3

UNLESS OTHERWISE SPECIFIED DIMENSIONS ARE IN MILLIMETERS		UNIVERSAL MOTORS		DESIGNS AND OR BREAK SHARP EDGES	DO NOT SCALE DRAWING	REVISION
ISO2768MK		UNIVERSAL MOTORS				
NAME	SIGNATURE/DATE	TITLE:		PE30/UM4C 315L-4/6/8 B3		
DESIGN		DRAWING NO:		ATPE30UM4C315L401		
CHIEF/APPV'D:		MATERIAL:	WEIGHT:	SCALE:1:10	SHEET 1 OF 1	
Esta informação é restrita ou confidencial; não podendo ser divulgada, publicada ou fornecida total ou parcialmente a terceiros sem o prévio consentimento da UNIVERSAL MOTORS S.A.						

Regime - S1

Altitude - 1000m

Environment Temperature - 40°C

CONTACTS:

UNIVERSAL MOTORS Tel: +351 252 299 080
 Rua de São Brás,745 Fax: +351 252 299 089
 4480-782 VILA DO CONDE Mail: geral@universalmotors.pt

* References applied only in the UK